

Part 3

How to Use the New Updated BRHS Photo System

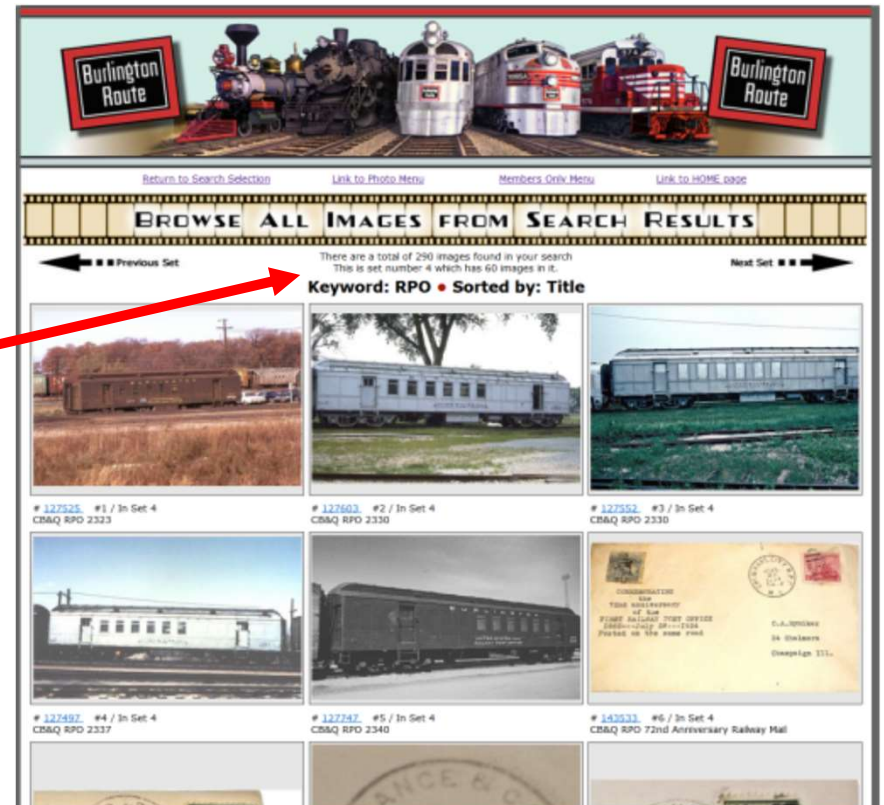
A look at how the second, or 'browser', page works

Each of the three methods for locating images is followed by the 'browser' pages. The browser page operates the same for all three methods. It consists of up to 20 rows of images, with three images on each row. This makes 60 images to a web page, which is called a 'set'.



Just above the first row of photos is some status information. It shows the number of images that were found. Below that it will tell you which 'set' you are looking at. In the case of the illustration above it shows that the user is currently browsing on the 4th set of 60 images.

Just below the status is the choice the user made to locate images. In the above example he used a keyword of 'RPO', and sorted by 'title'.

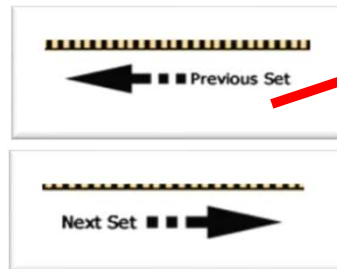


Part 3

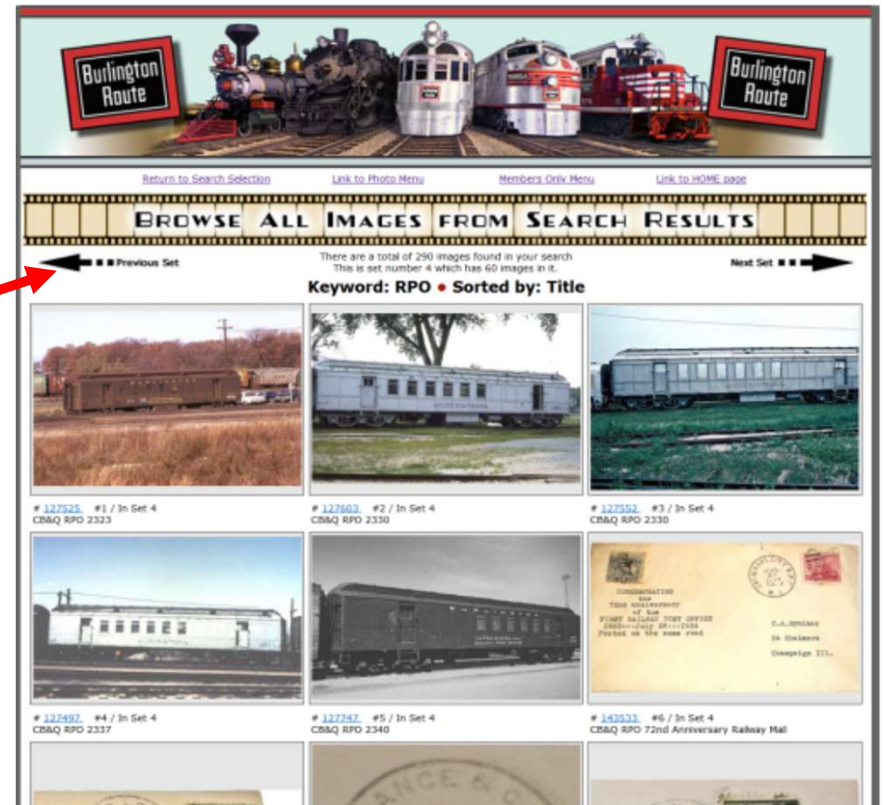
How to Use the New Updated BRHS Photo System

A look at how the second, or 'browser', page works

To move from one set of 60 images to the next use the two arrows located just below the BRHS Photo System banner. The arrow on the left will take you back to the previous set of 60 image and the one on the right will take you to the next set of 60 images, assuming that there are more images (or fewer images).



There is a similar set of arrows below that last (20th) row of images.



Part 3

How to Use the New Updated BRHS Photo System

A look at how the second, or 'browser', page works

Located below each photo on the browser page is some helpful information.

The first row begins with the system's photo number. Following that there is the image sequence number within the current image set of 60 images. In the example on the right, the first image (row1/columnA) is number 127525 and it is the first image in the fourth set of 60 images.

The second row is the image title from the database. The total length displayed is truncated to keep it at a helpful but limited length.

Some images are duplicates.

When they are spotted and marked as 'Consider Deleting' (BOX-Y in the categories) a third line will appear under the photo. It will say '>Marked to Delete<'. This tells views and editors that this image has been picked to delete, and thereby helping to prevent deleting the wrong (or all) duplicate images. More about this later.






Return to Search Selection Link to Photo Menu Members Only Menu

BROWSE ALL IMAGES FROM SEARCH

← Previous Set

There are a total of 290 images found in your search
This is set number 4 which has 60 images in it.

Keyword: RPO • Sorted by: Title

		
# 127525 #1 / In Set 4 CB&Q RPO 2323	# 127603 #2 / In Set 4 CB&Q RPO 2330	# 127604 #3 / In Set 4 CB&Q RPO 2330

Learn more about the New BRHS Photo System tomorrow in Part 4